



bpharchitects

19624A 74th Ave. W  
Lynnwood, WA 98036  
(425) 774-4701  
www.bpharch.com

tenant improvement  
for

eastside



CHRISTIAN FELLOWSHIP

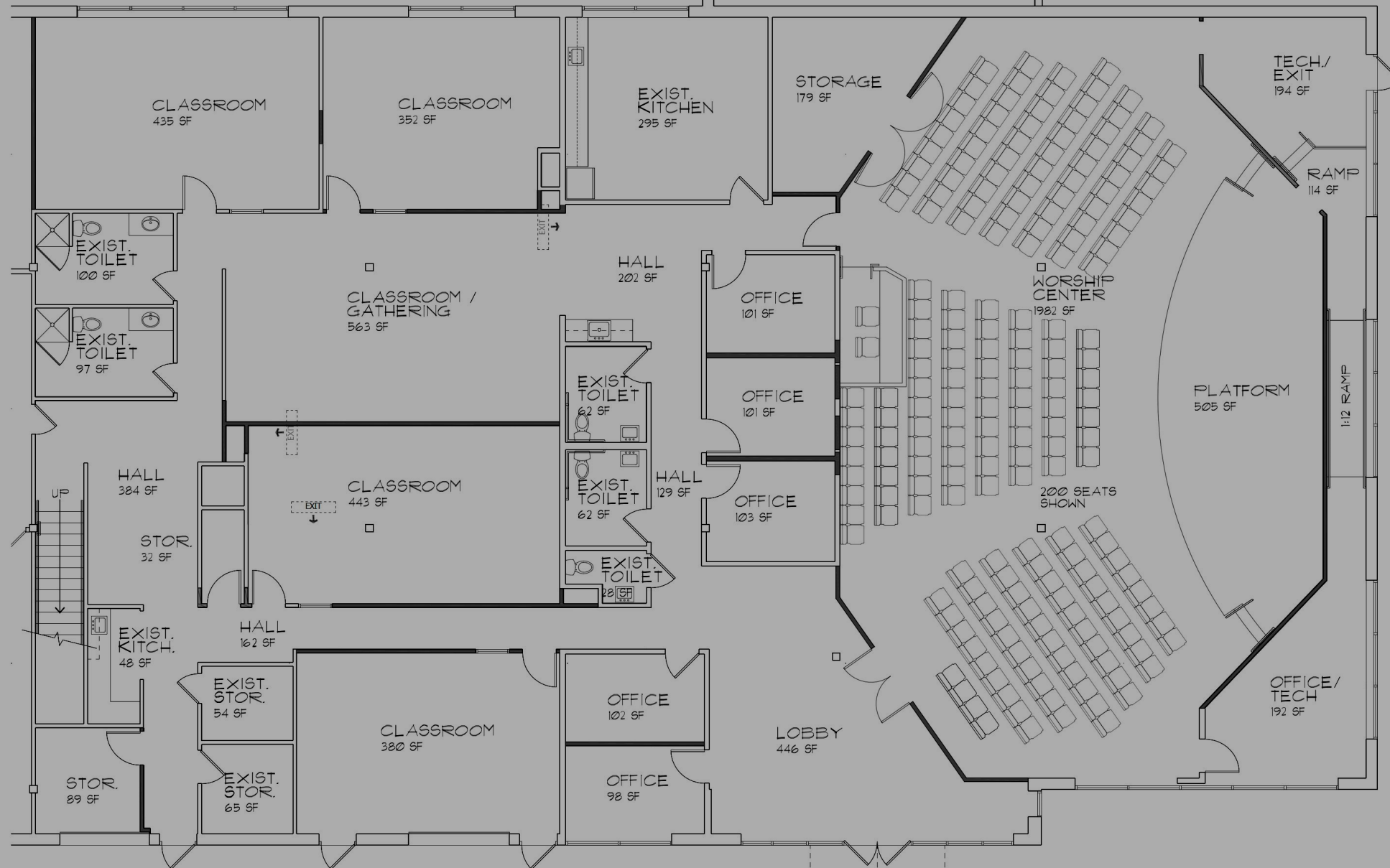
12040 115TH AVE. NE  
KIRKLAND, WA 98033

No. Date Revision By  
02/12/2012  
Date

Drawn By  
Checked By  
Project Number  
File Number

Sheet Title

Sheet Number



CHURCH FLOOR PLAN

1/4" = 1'-0"



12/20/11 12:00 PM 12/20/11 12:00 PM 12/20/11 12:00 PM 12/20/11 12:00 PM